



# WF18TB PROFILE

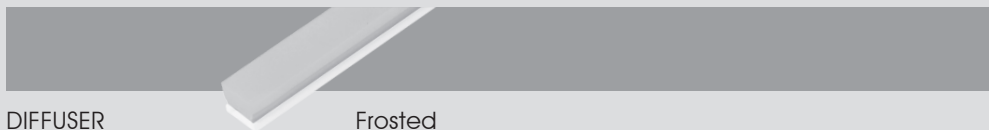
## WEATHER PROOF FLEXIBLE TOP-BEND LINEAR PROFILE LUMINAIRE



White,  
Frosted Diffuser

### PROFILE FINISHING

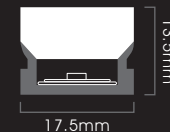
White



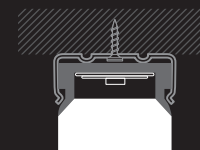
DIFFUSER

Frosted

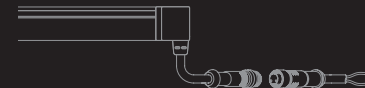
### DIMENSION



### INSTALLATION



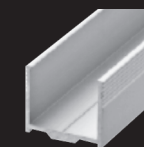
Rear wire exit



### ACCESSORIES



Mounting Clip



Aluminium Tray

Beam Angle: 115°



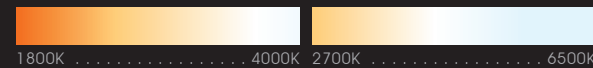
- Profile Type : 17.5mm width flexible PMMA linear profile
- Profile Finishing : White
- Diffuser : Frosted
- Light Uniformity : Lightly dot-visible
- Mounting : Surface, with stainless steel mounting clip or aluminium tray
- Compatible LED Module : FM6, FM8 TW, FM8 WD, FM10 RGB
- CRI : Ra>90, R9>50
- SDCM : 3 step MacAdam ellipse binning
- Lifetime : Up to 50,000 hours L80 lamp life at Ta = 25°C
- Voltage : 24V DC
- Maximum Power : 10W/m
- Length Options : 958mm to 4958mm by increment of 50mm
- Operating Temperature : Ta (min) = -20°C, Ta (max) = +50°C
- Wire Connection : Supplied with insulated IP67 wires and connector at 200mm length
- IP Rating : IP67
- Profile LOR : 50% (Frosted diffuser)

#### ☐ CCT OPTIONS

Single CCT



Tunable-White



Dim-to-Warm

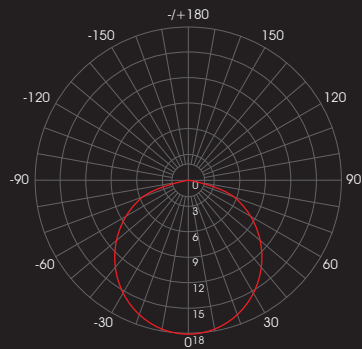


RGB



## PHOTOMETRICS

### With FM6 10W/m



Correction Factor : FM6 5W/m ~ f = 0.50  
FM6 10W/m ~ f = 1.00

## SPECIFICATIONS

### With FM6, FM8 TW, FM8 WD Module

CCT	Efficacy (lm/W)	Luminous Flux per meter (lm/m)		Diffuser Type
		5W/m	10W/m	
<b>1800K</b> <b>2000K</b>	38.7	193	387	Frosted
<b>2200K</b> <b>2500K</b>	46.1	231	461	
<b>2700K</b> <b>3000K</b> <b>3500K</b>	53.0	265	530	
<b>4000K</b> <b>5000K</b> <b>5700K</b> <b>6500K</b>	55.7	278	557	

### With FM10 RGB Module

CCT	Efficacy (lm/W)	Diffuser Type	RGB Wavelength (nm)
<b>Red</b>	15.0	Frosted	617 - 627
<b>Green</b>	29.0		515 - 525
<b>Blue</b>	6.0		464 - 474

ORDERING MATRIX

FULLY ASSEMBLED WITH FLEXIBLE LINEAR LED STRIP

Module	Finishing	Diffuser	Length	LED Module Power & CCT				Wire End & Exit Configuration	Ingress Protection			
<b>WF18TB</b>	<b>WH</b> White	<b>F</b> Frosted	<b>958</b> 958mm	FM6	<b>5</b> 5W/m	<b>22</b>	2200K	<b>SR</b> Single Wire End, Rear Exit	<b>IP67</b> IP67			
			↕							<b>10</b> 10W/m	<b>25</b>	2500K
			<b>4958</b> 4958mm									
			*by every 50mm			<b>30</b>	3000K					
						<b>35</b>	3500K					
						<b>40</b>	4000K					
						<b>50</b>	5000K					
						<b>57</b>	5700K					
						<b>65</b>	6500K					
				FM8	<b>5</b> 5W/m	<b>TW1840</b>	Tunable-White 1800K-4000K					
				TW/WD	<b>10</b> 10W/m	<b>TW2765</b>	Tunable-White 2700K-6500K					
						<b>WD1830</b>	Dim-to-Warm 1800K-3000K					
				FM10	<b>10</b> 10W/m	<b>RGB</b>	RGB					
				RGB								

Example: WF18TB-WH-F-958-5-30-SR-IP67

WF18TB Profile, White, Frosted Diffuser, 958mm, with FM6 - 5W/m, 3000K, Single Wire End at Rear Exit, IP67

\*Mounting accessories for flexible linear profiles are not included and to be ordered seperately.

MOUNTING ACCESSORIES

Aluminium Tray	Finishing	Length
<b>WF18TB-AT</b>	<b>SL</b> Silver	<b>1000</b> 1000mm
		<b>1500</b> 1500mm
		<b>2000</b> 2000mm

Example: LWF18TB-AT-SL-2000

WF18TB Aluminium Tray, Silver, 2000mm

Mounting Clip
<b>WF18TB-MC</b>

Example: WP18F-MC

WP18F Mounting Clip