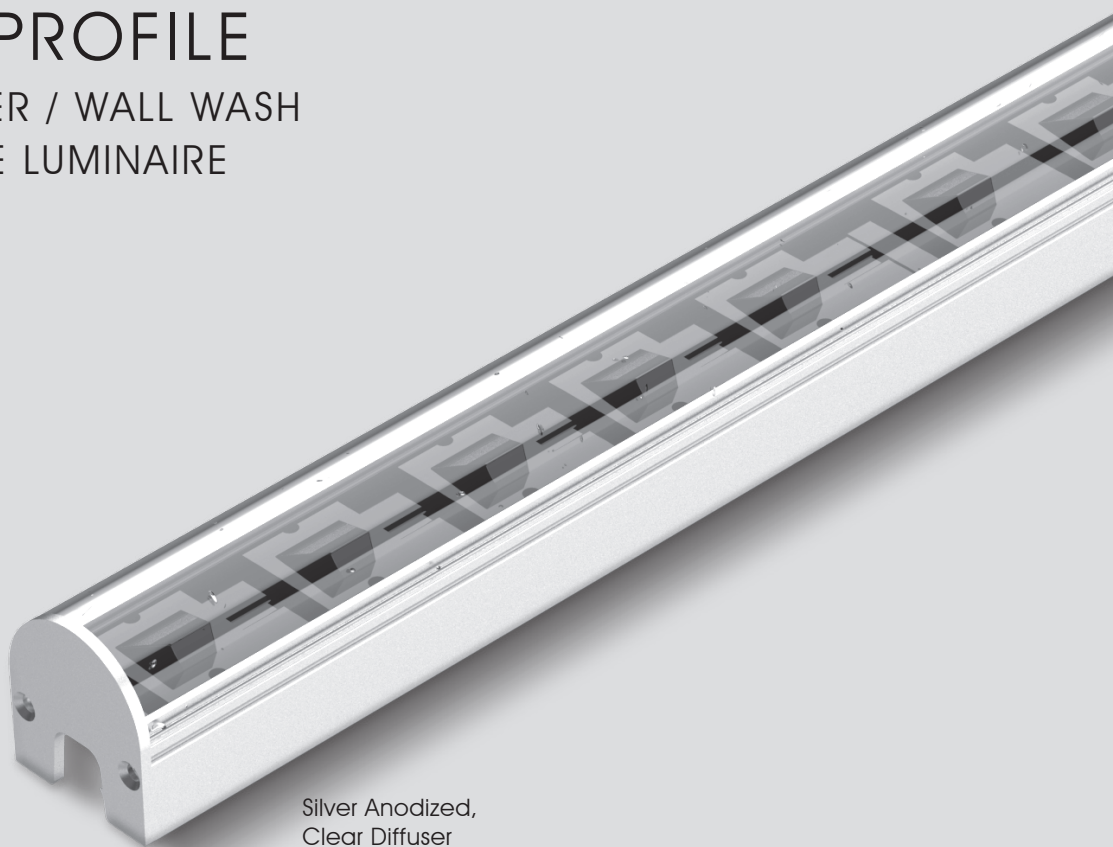




# LP30CC PROFILE

CURVED GRAZER / WALL WASH  
LINEAR PROFILE LUMINAIRE



Silver Anodized,  
Clear Diffuser

## PROFILE FINISHING

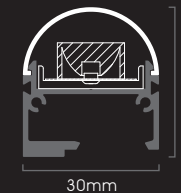
Silver Anodized



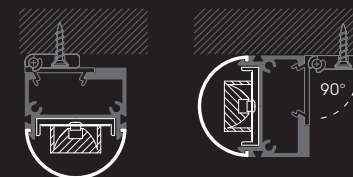
DIFFUSER

Clear

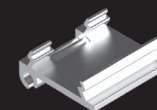
## DIMENSION



## INSTALLATION

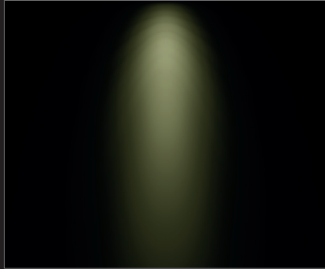


## ACCESSORIES



Mounting Clip

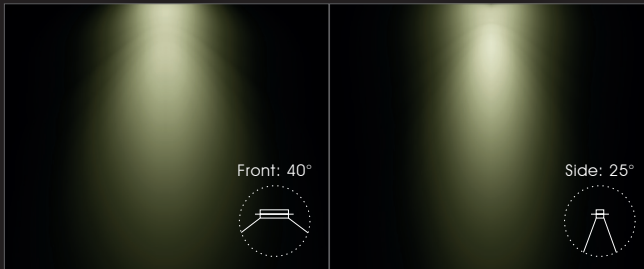
Beam Angle: Symmetric 20° Grazer



Beam Angle: Symmetric 30° Grazer



Beam Angle: Symmetric 25° x 40° Grazer



Beam Angle: Asymmetric 70° x 110° tilted at 30° Wall Wash



- Profile Type : 30mm width aluminium linear profile
- Profile Finishing : Silver Anodised
- Diffuser : Clear
- Light Uniformity : Dot-visible
- Mounting : Surface, with 90° adjustable mounting clip
- Compatible LED Module : FM23G, FM23WW
- CRI : Ra > 90, R9 > 50
- SDCM : 3 step MacAdam ellipse binning
- Lifetime : Up to 50,000 hours L80 lamp life at Ta = 25°C
- Voltage : 24V DC
- Maximum Power : 20W/m
- Length Options : 216.6mm to 2050mm by increment of 166.6mm
- Operating Temperature : Ta (min) = -40°C, Ta (max) = +45°C
- Wire Connection : Supplied with insulated IP67 wires and connector at 200mm length
- IP Rating : IP67 for FM23G or FM23WW LED module only, IP40 for LP30CC profile
- Profile LOR : 85% (Clear diffuser)

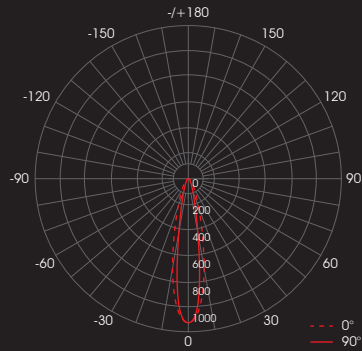
#### □ CCT OPTIONS

Single CCT



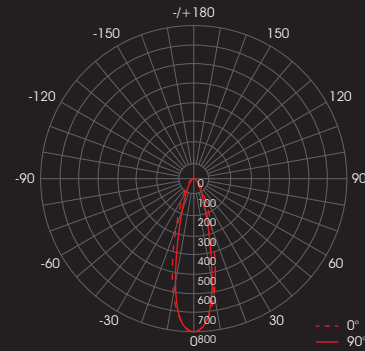
## PHOTOMETRICS

### With FM23G 19.2W/m 20°



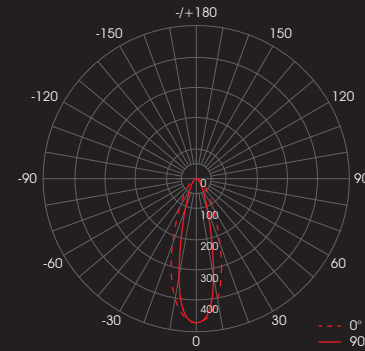
Correction Factor : FM23G 9.6W/m ~  $f = 0.50$   
 FM23G 14.4W/m ~  $f = 0.75$   
 FM23G 19.2W/m ~  $f = 1.00$

### With FM23G 19.2W/m 30°



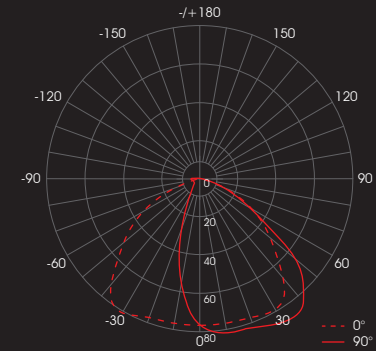
Correction Factor : FM23G 9.6W/m ~  $f = 0.50$   
 FM23G 14.4W/m ~  $f = 0.75$   
 FM23G 19.2W/m ~  $f = 1.00$

### With FM23G 19.2W/m 25° x 40°



Correction Factor : FM23G 9.6W/m ~  $f = 0.50$   
 FM23G 14.4W/m ~  $f = 0.75$   
 FM23G 19.2W/m ~  $f = 1.00$

### With FM23WW 19.2W/m



Correction Factor : FM23WW 9.6W/m ~  $f = 0.50$   
 FM23WW 14.4W/m ~  $f = 0.75$   
 FM23WW 19.2W/m ~  $f = 1.00$

## SPECIFICATIONS

### With FM23G Module

CCT	Efficacy (lm/W)	Luminous Flux per meter (lm/m)		
		9.6W/m	14.4W/m	19.2W/m
2700K	79.2	760	1142	1520
3000K				
3500K				
4000K	83.1	798	1199	1596
5000K				
5700K				
6500K				

### With FM23WW Module

CCT	Efficacy (lm/W)	Luminous Flux per meter (lm/m)		
		9.6W/m	14.4W/m	19.2W/m
2700K	60.0	576	862	1148
3000K				
3500K				
4000K	63.0	605	905	1205
5000K				
5700K				
6500K				

ORDERING MATRIX

FULLY ASSEMBLED WITH FLEXIBLE LINEAR LED STRIP

Module	Finishing	Diffuser	Length	LED Module Power & CCT	Wire End & Exit Configuration	Ingress Protection												
<b>LP30CC</b>	<b>SL</b> Silver	<b>C</b> Clear	<b>216</b> 216.6mm	FM23 <b>G-20</b> Symmetric 20°	<b>9</b> 9.6W/m	<b>27</b> 2700K	<b>SR</b> Single Wire End, Rear Exit											
			<b>383</b> 383.3mm					<b>14</b> 14.4W/m	<b>30</b> 3000K									
			<b>550</b> 550.0mm							<b>G-30</b> Symmetric 30°	<b>19</b> 19.2W/m	<b>35</b> 3500K						
			<b>716</b> 716.6mm										<b>G-25x40</b> Symmetric 25° x 40°	<b>40</b> 4000K				
			<b>883</b> 883.3mm												<b>50</b> 5000K			
			<b>1050</b> 1050.0mm													<b>WW</b> Asymmetric 70° x 110° tilted at 30°	<b>57</b> 5700K	
			<b>1216</b> 1216.6mm															<b>65</b> 6500K
			<b>1383</b> 1383.3mm															
			<b>1550</b> 1550.0mm															
			<b>1716</b> 1716.6mm															
<b>1883</b> 1883.3mm																		
<b>2050</b> 2050.0mm																		

Example: LP30CC-SL-C-1050-G-20-19-30-SR-IP67

LP30CC Profile, Silver, Clear Diffuser, 1050mm, with FM23G - Symmetric 20° Beam Angle, 19.2W/m, 3000K, Single Wire End at Rear Exit, IP67, Including 2 x End Cap & 2 x Mounting Clip

\*Linear profiles of 216.6mm to 1050mm length are supplied with 2 mounting clips.

\*Linear profiles of 1216.6mm to 1550mm length are supplied with 3 mounting clips.

\*Linear profiles of 1716.6mm to 2050mm length are supplied with 4 mounting clips.

LINEAR PROFILE ONLY

Profile	Finishing	Diffuser	Length
<b>LP30CC</b>	<b>SL</b> Silver	<b>C</b> Clear	<b>1046</b> 1046mm
			<b>1546</b> 1546mm
			<b>2046</b> 2046mm

Example: LP30CC-SL-C-1046

LP30CC Profile, Silver, Clear Diffuser, 1046mm

End Cap

**LP30CC-EC**

Example: LP30CC-EC

LP30CC End Cap

Mounting Clip

**LP30CC-MC**

Example: LP30CC-MC

LP30CC Mounting Clip