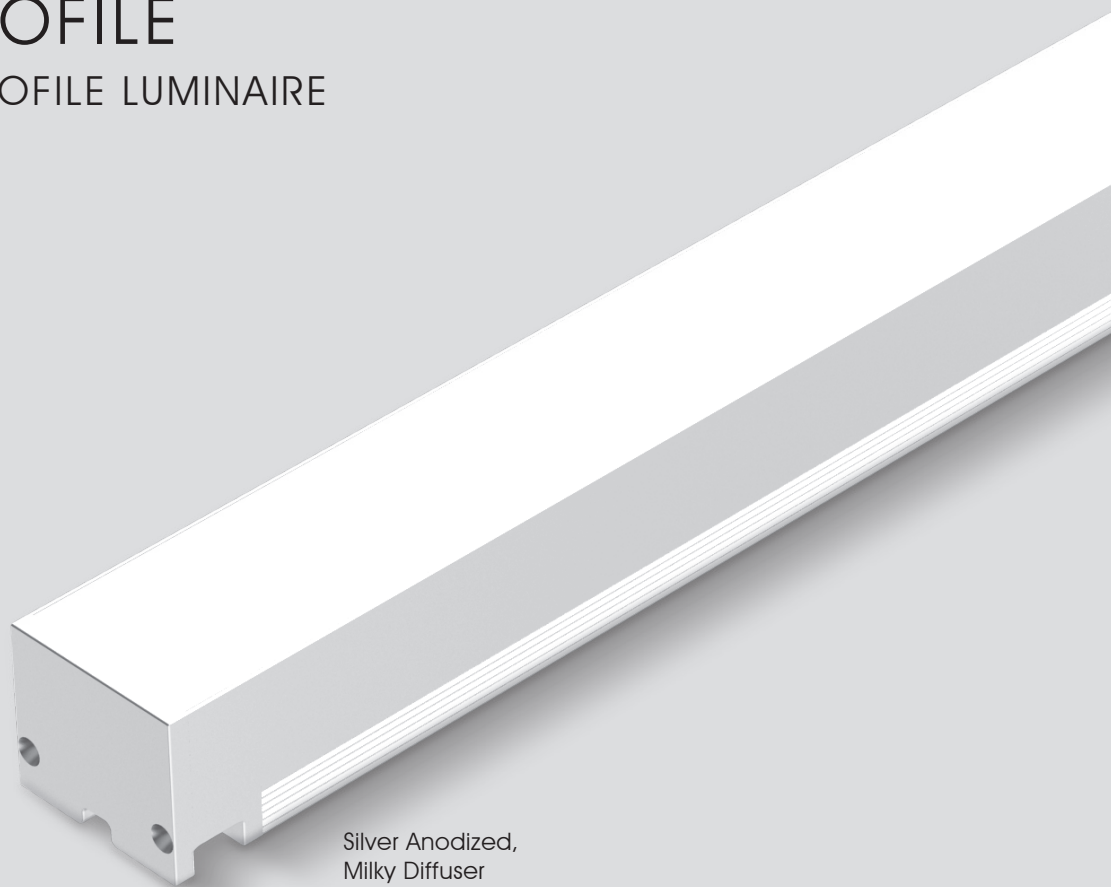




LP28F PROFILE

FLAT LINEAR PROFILE LUMINAIRE



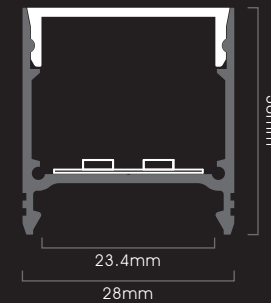
Silver Anodized,
Milky Diffuser

PROFILE FINISHING

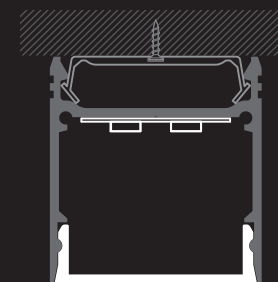
Silver Anodized



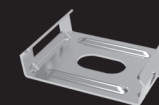
DIMENSION



INSTALLATION

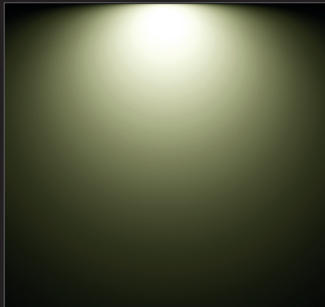


ACCESSORIES



Mounting Clip

Beam Angle: 110°



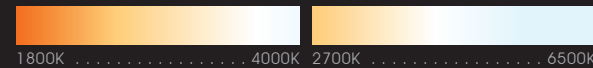
- Profile Type : 28mm width aluminium linear profile
- Profile Finishing : Silver Anodised
- Diffuser : Milky
- Light Uniformity : Dot-less
- Mounting : Surface, with stainless steel mounting clip
- Compatible LED Module : FM6, FM12, FM8 TW, FM8 WD, FM10 WD, FM10 RGB, FM12 RGBW
- CRI : Ra>90, R9>50
- SDCM : 3 step MacAdam ellipse binning
- Lifetime : Up to 50,000 hours L80 lamp life at Ta = 25°C
- Voltage : 24V DC
- Maximum Power : 30W/m
- Length Options : 113mm to 1963mm by increment of 50mm
- Operating Temperature : Ta (min) = -20°C, Ta (max) = +50°C
- Wire Connection : Supplied with insulated wires at 200mm length
- IP Rating : IP40 or IP54
- Profile LOR : 40% (Milky diffuser)

☐ CCT OPTIONS

Single CCT



Tunable-White



Dim-to-Warm



RGB

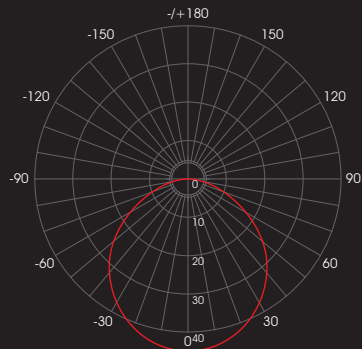


RGBW



PHOTOMETRICS

With FM12 30W/m



Correction Factor : FM6 5W/m ~ f = 0.17
 FM6 10W/m ~ f = 0.33
 FM6 15W/m ~ f = 0.50
 FM6 20W/m ~ f = 0.67
 FM12 25W/m ~ f = 0.83
 FM12 30W/m ~ f = 1.00

SPECIFICATIONS

With FM6, FM12, FM8 TW, FM8 WD Module

CCT	Efficacy (lm/W)	Luminous Flux per meter (lm/m)						Diffuser Type
		5W/m	10W/m	15W/m	20W/m	25W/m	30W/m	
1800K 2000K	31.0	155	310	464	619	774	929	Milky
2200K 2500K	36.9	184	369	553	738	922	1107	
2700K 3000K 3500K	42.4	212	424	636	848	1060	1272	
4000K 5000K 5700K 6500K	44.5	223	445	668	890	1113	1336	

With FM10 WD Module

CCT	Dimming Level	Efficacy (lm/W)	Luminous Flux per meter (lm/m)	Diffuser Type
			15W/m	
1800K	7%	26.6	28	Milky
2000K	16%	29.8	72	
2200K	20%	33.1	99	
2500K	29%	38.0	165	
2700K	38%	41.2	235	
3000K	100%	46.1	691	

With FM10 RGB Module

CCT	Efficacy (lm/W)	Diffuser Type	RGB Wavelength (nm)
Red	12.0	Milky	617 - 627
Green	23.2		515 - 525
Blue	4.8		464 - 474

With FM12 RGBW Module

CCT	Efficacy (lm/W)	Diffuser Type	RGB Wavelength (nm) / White CCT
Red	20.0	Milky	620 - 630
Green	30.4		515 - 525
Blue	8.0		460 - 470
White	46.0		3000K, 4000K, 6500K

ORDERING MATRIX

FULLY ASSEMBLED WITH FLEXIBLE LINEAR LED STRIP

Module	Finishing	Diffuser	Length	LED Module Power & CCT				Wire End & Exit Configuration	Ingress Protection
LP28F	SL Silver	M Milky	113 113mm ↑ ↓ 1963 1963mm *by every 50mm	FM6	5 5W/m	22 2200K	SE Single Wire End, End Cap Exit	IP40 IP40	
					10 10W/m	25 2500K			
					15 15W/m	27 2700K			
					20 20W/m	30 3000K			
					FM12	25 25W/m			35 3500K
						30 30W/m			40 4000K
				FM8 TW/WD	5 5W/m	TW1840 Tunable-White 1800K-4000K	DE Double Wire End, End Cap Exit		
					10 10W/m	TW2765 Tunable-White 2700K-6500K			
					15 15W/m	WD1830 Dim-to-Warm 1800K-3000K			
					20 20W/m				
				FM10 WD	15 15W/m	WD1830 Dim-to-Warm 1800K-3000K			
				FM10 RGB	10 10W/m	RGB RGB			
15 15W/m									
20 20W/m									
FM12 RGBW	10 10W/m	RGBW30 RGBW(3000K)							
	15 15W/m	RGBW40 RGBW(4000K)							
	20 20W/m	RGBW65 RGBW(6500K)							

Example: LP28F-SL-M-963-5-30-SE-IP40

LP28F Profile, Silver, Milky Diffuser, 963mm, with FM6 - 5W/m, 3000K, Single Wire End at End Cap Exit, IP40, Including 2 x End Cap & 2 x Mounting Clip

*Linear profiles of 113mm to 963mm length are supplied with 2 mounting clips.
 *Linear profiles of 1013mm to 1463mm length are supplied with 3 mounting clips.
 *Linear profiles of 1513mm to 1963mm are supplied with 4 mounting clips.

LINEAR PROFILE ONLY

Profile	Finishing	Diffuser	Length
LP28F	SL Silver	M Milky	1000 1000mm
			1500 1500mm
			2000 2000mm

Example: LP28F-SL-M-2000
 LP28F Profile, Silver, Milky Diffuser, 2000mm

End Cap	Finishing	Type
LP28F-EC	SL Silver	B Blank

Example: LP28F-EC-SL-B
 LP28F End Cap, Silver, Blank

Mounting Clip
LP28F-MC

Example: LP28F-MC
 LP28F Mounting Clip