



LP20G PROFILE

GRAZER LINEAR PROFILE LUMINAIRE



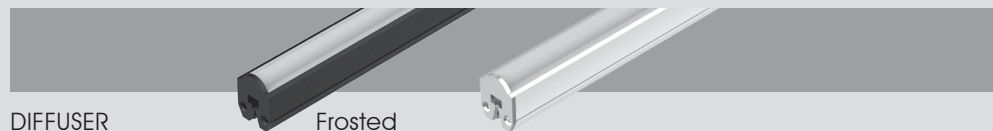
Matt Black,
Frosted Diffuser

Silver Anodized,
Frosted Diffuser

PROFILE FINISHING

Matt Black

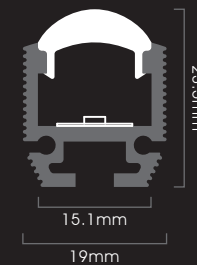
Silver Anodized



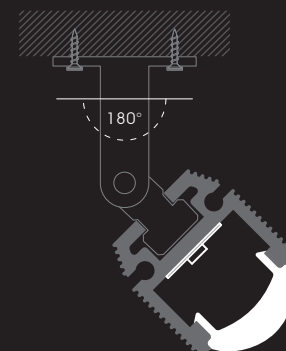
DIFFUSER

Frosted

DIMENSION



INSTALLATION

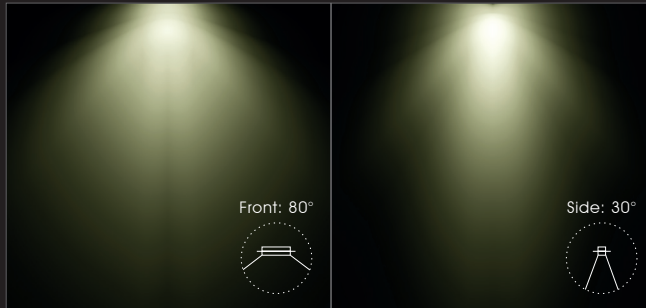


ACCESSORIES



Mounting Clip

Beam Angle: 30° x 80°



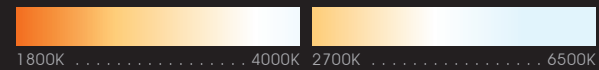
- Profile Type : 19.5mm width aluminium linear profile
- Profile Finishing : Matt Black / Silver Anodised
- Diffuser : Frosted
- Light Uniformity : Lightly dot-visible
- Mounting : Surface, with 180° adjustable mounting clip
- Compatible LED Module : FM6, FM8 TW, FM8 WD, FM10 WD, FM10 RGB, FM12 RGBW
- CRI : Ra>90, R9>50
- SDCM : 3 step MacAdam ellipse binning
- Lifetime : Up to 50,000 hours L80 lamp life at Ta = 25°C
- Voltage : 24V DC
- Maximum Power : 20W/m
- Length Options : 113mm to 1963mm by increment of 50mm
- Operating Temperature : Ta (min) = -20°C, Ta (max) = +50°C
- Wire Connection : Supplied with insulated wires at 200mm length
- IP Rating : IP40 or IP54
- Profile LOR : 60% (Frosted diffuser)

☐ CCT OPTIONS

Single CCT



Tunable-White



Dim-to-Warm



RGB



RGBW



W = 3000K



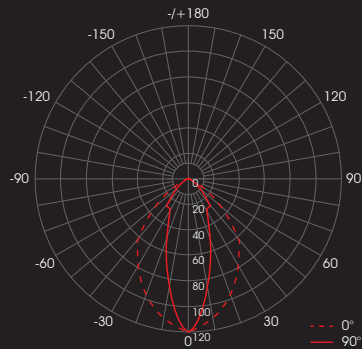
W = 4000K



W = 6500K

PHOTOMETRICS

With FM6 20W/m



Correction Factor : FM6 5W/m ~ f = 0.25
 FM6 10W/m ~ f = 0.50
 FM6 15W/m ~ f = 0.75
 FM6 20W/m ~ f = 1.00

SPECIFICATIONS

With FM6, FM8 TW, FM8 WD Module

| CCT | Efficacy (lm/W) | Luminous Flux per meter (lm/m) | | | | Diffuser Type |
|--|-----------------|--------------------------------|-------|-------|-------|---------------|
| | | 5W/m | 10W/m | 15W/m | 20W/m | |
| 1800K 2000K | 46.4 | 232 | 464 | 696 | 929 | Frosted |
| 2200K 2500K | 55.3 | 277 | 553 | 830 | 1107 | |
| 2700K 3000K 3500K | 63.6 | 318 | 636 | 954 | 1272 | |
| 4000K 5000K 5700K 6500K | 66.8 | 334 | 668 | 1002 | 1336 | |

With FM10 WD Module

| CCT | Dimming Level | Efficacy (lm/W) | Luminous Flux per meter (lm/m) | Diffuser Type |
|--------------|---------------|-----------------|--------------------------------|---------------|
| | | | 15W/m | |
| 1800K | 7% | 39.9 | 42 | Frosted |
| 2000K | 16% | 44.8 | 107 | |
| 2200K | 20% | 49.6 | 149 | |
| 2500K | 29% | 56.9 | 248 | |
| 2700K | 38% | 61.8 | 352 | |
| 3000K | 100% | 69.1 | 1037 | |

With FM10 RGB Module

| CCT | Efficacy (lm/W) | Diffuser Type | RGB Wavelength (nm) |
|--------------|-----------------|---------------|---------------------|
| Red | 18.0 | Frosted | 617 - 627 |
| Green | 34.8 | | 515 - 525 |
| Blue | 7.2 | | 464 - 474 |

With FM12 RGBW Module

| CCT | Efficacy (lm/W) | Diffuser Type | RGB Wavelength (nm) / White CCT |
|--------------|-----------------|---------------|---------------------------------|
| Red | 30.0 | Frosted | 620 - 630 |
| Green | 45.6 | | 515 - 525 |
| Blue | 12.0 | | 460 - 470 |
| White | 69.0 | | 3000K, 4000K, 6500K |

ORDERING MATRIX

FULLY ASSEMBLED WITH FLEXIBLE LINEAR LED STRIP

| Module | Finishing | Diffuser | Length | LED Module Power & CCT | | | | Wire End & Exit Configuration | Ingress Protection | | | | | | | | | | | |
|-----------------|---------------------------|---------------------------|------------------|------------------------|---------------------------|-----------------|---|-------------------------------|--------------------|-----------------|-----------------|-----------------|-----------------|-----------------|---|-----------------|-----------------|---|-----------------|---------------------------------------|
| LP20G | MB Matt Black | F Frosted | 113 113mm | FM6 | 5 5W/m | 22 2200K | SE Single Wire End, End Cap Exit | IP40 IP40 | | | | | | | | | | | | |
| | | | ↑ ↓ | | | | | | 10 10W/m | 25 2500K | | | | | | | | | | |
| | SL Silver | 1963 1963mm | *by every 50mm | | | | | | | | 15 15W/m | 27 2700K | | | | | | | | |
| | | | | | | | | | | | | | 20 20W/m | 30 3000K | | | | | | |
| | FM8 TW/WD | 5 5W/m | | | | | | | | | | | | | TW1840 Tunable-White 1800K-4000K | 35 3500K | | | | |
| | | | | | | | | | | | | | | | | | 10 10W/m | TW2765 Tunable-White 2700K-6500K | | |
| | | | | | | | | | | | | | | | | | | | 15 15W/m | WD1830 Dim-to-Warm 1800K-3000K |
| | | | | | | | | | | | | | | | | | | | | |
| | FM10 WD | 15 15W/m | | | | | | | | | | | | | WD1830 Dim-to-Warm 1800K-3000K | | | | | |
| | | | | | | | | | | | | | | | | 10 10W/m | RGB RGB | | | |
| | FM10 RGB | 15 15W/m | | | | | | | | | | | | | | | | | | |
| | | | | | | | | | | | | | | | 20 20W/m | | | | | |
| FM12 RGBW | 10 10W/m | RGBW30 RGBW(3000K) | | | | | | | | | | | | | | | | | | |
| | | | | 15 15W/m | RGBW40 RGBW(4000K) | | | | | | | | | | | | | | | |
| 20 20W/m | RGBW65 RGBW(6500K) | | | | | | | | | | | | | | | | | | | |

Example: LP20G-SL-F-963-5-30-SE-IP40

LP20G Profile, Silver, Frosted Diffuser, 963mm, with FM6 - 5W/m, 3000K, Single Wire End at End Cap Exit, IP40, Including 2 x End Cap & 2 x Mounting Clip

*Linear profiles of 113mm to 963mm length are supplied with 2 mounting clips.

*Linear profiles of 1013mm to 1463mm length are supplied with 3 mounting clips.

*Linear profiles of 1513mm to 1963mm are supplied with 4 mounting clips.

LINEAR PROFILE ONLY

| Profile | Finishing | Diffuser | Length |
|--------------|----------------------|------------------|--------------------|
| LP20G | MB Matt Black | F Frosted | 1000 1000mm |
| | | | 1500 1500mm |
| | SL Silver | | 2000 2000mm |

Example: LP20G-SL-F-2000

LP20G Profile, Silver, Frosted Diffuser, 2000mm

| End Cap | Finishing | Type |
|-----------------|------------------|-----------------------|
| LP20G-EC | B Black | O With Opening |
| | SL Silver | B Blank |

Example: LP20G-EC-SL-O

LP20G End Cap, Silver, With Opening

| Mounting Clip |
|-----------------|
| LP20G-MC |

Example: LP20G-MC

LP20G Mounting Clip