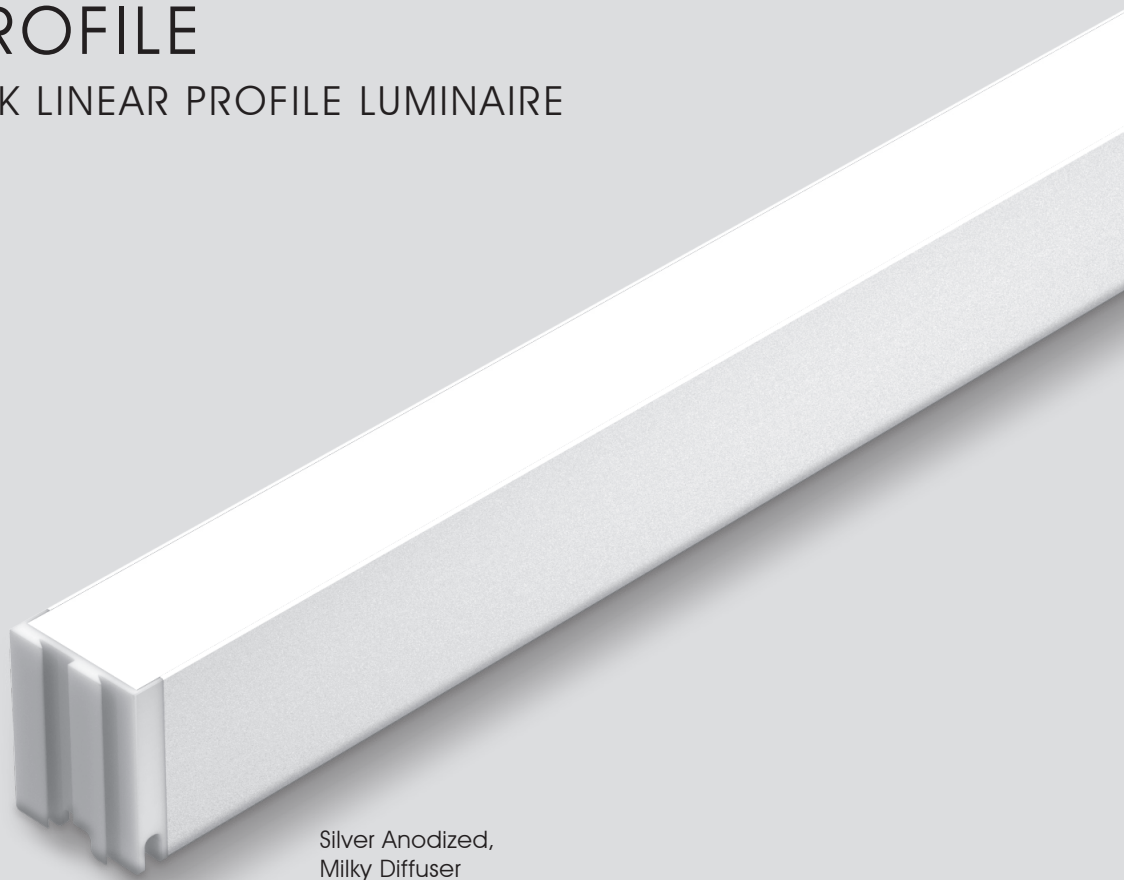




LP20Fi PROFILE

FLAT INTERLOCK LINEAR PROFILE LUMINAIRE



Silver Anodized,
Milky Diffuser

PROFILE FINISHING

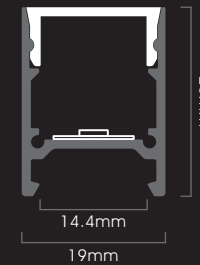
Silver Anodized



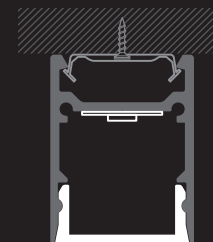
DIFFUSER

Milky

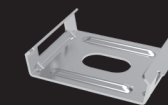
DIMENSION



INSTALLATION

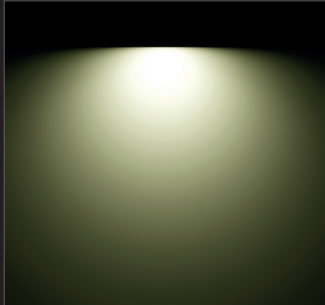


ACCESSORIES



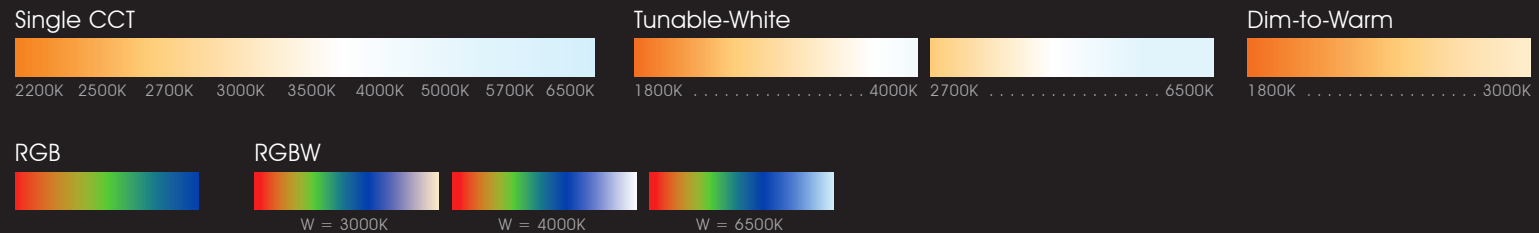
Mounting Clip

Beam Angle: 110°



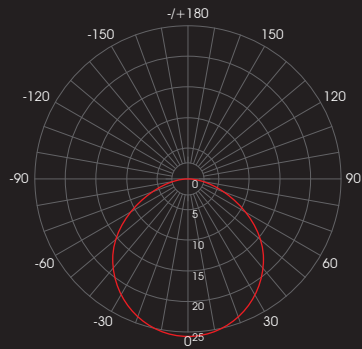
- Profile Type : 19mm width aluminium linear profile
- Profile Finishing : Silver Anodised
- Diffuser : Milky
- Light Uniformity : Dot-less
- Mounting : Surface, with stainless steel mounting clip
- Compatible LED Module : FM6, FM8 TW, FM8 WD, FM10 WD, FM10 RGB, FM12 RGBW
- CRI : Ra>90, R9>50
- SDCM : 3 step MacAdam ellipse binning
- Lifetime : Up to 50,000 hours L80 lamp life at Ta = 25°C
- Voltage : 24V DC
- Maximum Power : 20W/m
- Length Options : 113mm to 1963mm by increment of 50mm
- Operating Temperature : Ta (min) = -20°C, Ta (max) = +50°C
- Wire Connection : Supplied with insulated wires at 200mm length
- IP Rating : IP40 or IP54
- Profile LOR : 35% (Milky diffuser)

☐ CCT OPTIONS



PHOTOMETRICS

With FM6 20W/m



Correction Factor : FM6 5W/m ~ f = 0.25
 FM6 10W/m ~ f = 0.50
 FM6 15W/m ~ f = 0.75
 FM6 20W/m ~ f = 1.00

SPECIFICATIONS

With FM6, FM8 TW, FM8 WD Module

CCT	Efficacy (lm/W)	Luminous Flux per meter (lm/m)				Diffuser Type
		5W/m	10W/m	15W/m	20W/m	
1800K 2000K	27.2	136	271	407	542	Milky
2200K 2500K	32.4	162	323	485	646	
2700K 3000K 3500K	37.2	186	371	557	742	
4000K 5000K 5700K 6500K	39.1	195	390	585	779	

With FM10 WD Module

CCT	Dimming Level	Efficacy (lm/W)	Luminous Flux per meter (lm/m)	Diffuser Type
			15W/m	
1800K	7%	23.3	24	Milky
2000K	16%	26.1	63	
2200K	20%	28.9	87	
2500K	29%	33.2	144	
2700K	38%	36.1	205	
3000K	100%	40.3	605	

With FM10 RGB Module

CCT	Efficacy (lm/W)	Diffuser Type	RGB Wavelength (nm)
Red	10.5	Milky	617 - 627
Green	20.3		515 - 525
Blue	4.2		464 - 474

With FM12 RGBW Module

CCT	Efficacy (lm/W)	Diffuser Type	RGB Wavelength (nm) / White CCT
Red	17.5	Milky	620 - 630
Green	26.6		515 - 525
Blue	7.0		460 - 470
White	40.3		3000K, 4000K, 6500K

ORDERING MATRIX

FULLY ASSEMBLED WITH FLEXIBLE LINEAR LED STRIP

Module	Finishing	Diffuser	Length	LED Module Power & CCT				Wire End & Exit Configuration	Ingress Protection		
LP20Fi	SL Silver	M Milky	113 113mm ↑ ↓ 1963 1963mm *by every 50mm	FM6	5 5W/m	22 2200K	SR Single Wire End, Rear Exit	IP40 IP40			
					10 10W/m	25 2500K					
					15 15W/m	27 2700K					
					20 20W/m	30 3000K					
						35 3500K					
						40 4000K					
						50 5000K					
						57 5700K					
						65 6500K					
					FM8 TW/WD	5 5W/m			TW1840 Tunable-White 1800K-4000K	DR Double Wire End, Rear Exit	IP54 IP54
						10 10W/m			TW2765 Tunable-White 2700K-6500K		
						15 15W/m			WD1830 Dim-to-Warm 1800K-3000K		
20 20W/m											
FM10 WD	15 15W/m	WD1830 Dim-to-Warm 1800K-3000K									
FM10 RGB	10 10W/m	RGB RGB									
	15 15W/m										
	20 20W/m										
FM12 RGBW	10 10W/m	RGBW30 RGBW(3000K)									
	15 15W/m	RGBW40 RGBW(4000K)									
	20 20W/m	RGBW65 RGBW(6500K)									

Example: LP20Fi-SL-M-963-5-30-SR-IP40

LP20Fi Profile, Silver, Milky Diffuser, 963mm, with FM6 - 5W/m, 3000K, Single Wire End at Rear Exit, IP40, Including 2 x End Cap & 2 x Mounting Clip

*Linear profiles of 113mm to 963mm length are supplied with 2 mounting clips.

*Linear profiles of 1013mm to 1463mm length are supplied with 3 mounting clips.

*Linear profiles of 1513mm to 1963mm are supplied with 4 mounting clips.

LINEAR PROFILE ONLY

Profile	Finishing	Diffuser	Length
LP20Fi	SL Silver	M Milky	1000 1000mm
			1500 1500mm
			2000 2000mm

Example: LP20Fi-SL-M-2000

LP20Fi Profile, Silver, Milky Diffuser, 2000mm

End Cap
LP20Fi-EC

Example: LP20Fi-EC

LP20Fi End Cap

Mounting Clip
LP20Fi-MC

Example: LP20Fi-MC

LP20Fi Mounting Clip