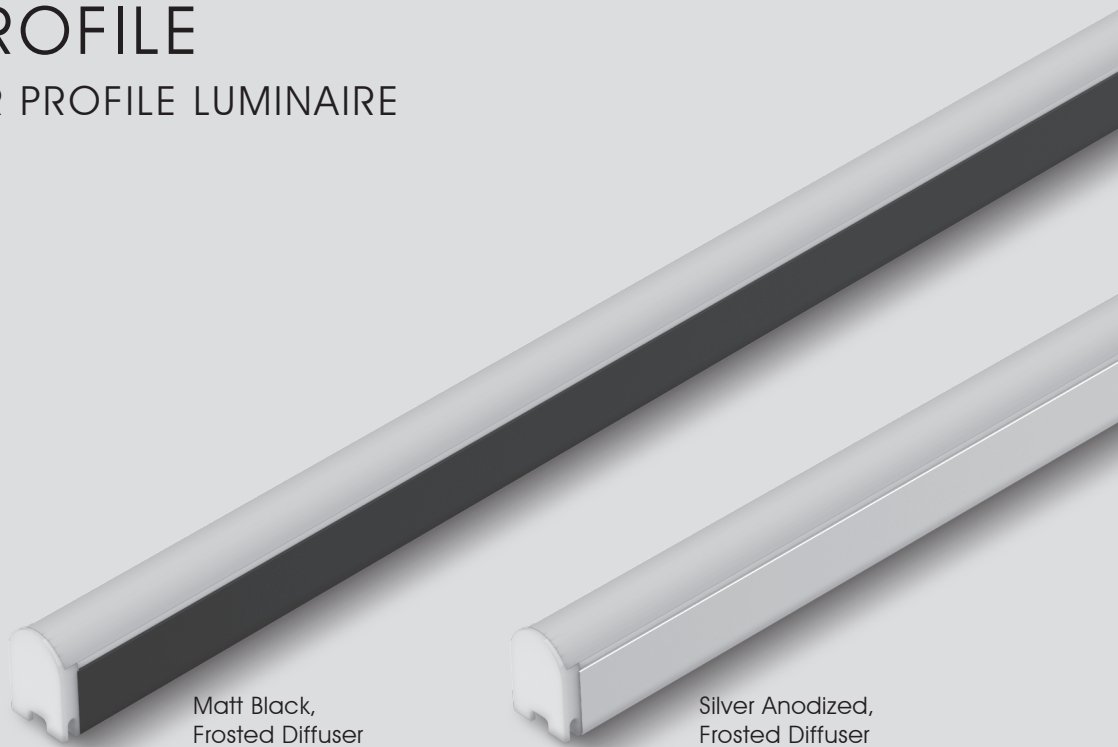




LP10G PROFILE

GRAZER LINEAR PROFILE LUMINAIRE



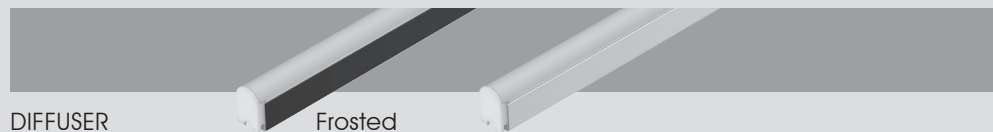
Matt Black,
Frosted Diffuser

Silver Anodized,
Frosted Diffuser

PROFILE FINISHING

Matt Black

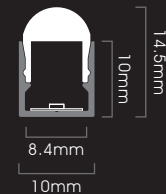
Silver Anodized



DIFFUSER

Frosted

DIMENSION



INSTALLATION



ACCESSORIES

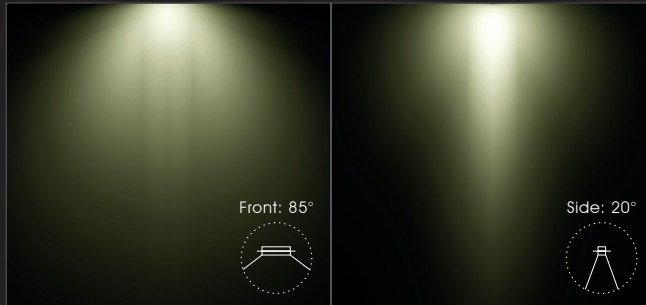


Mounting Clip



11.5mm

Beam Angle: 20° x 85°



- Profile Type : 10mm width aluminium linear profile
- Profile Finishing : Matt Black / Silver Anodised
- Diffuser : Frosted
- Light Uniformity : Lightly dot-visible
- Mounting : Surface, with stainless steel mounting clip
- Compatible LED Module : FM6, FM8 TW, FM8 WD
- CRI : Ra>90, R9>50
- SDCM : 3 step MacAdam ellipse binning
- Lifetime : Up to 50,000 hours L80 lamp life at Ta = 25°C
- Voltage : 24V DC
- Maximum Power : 10W/m
- Length Options : 113mm to 1963mm by increment of 50mm
- Operating Temperature : Ta (min) = -20°C, Ta (max) = +50°C
- Wire Connection : Supplied with insulated wires at 200mm length
- IP Rating : IP40 or IP54
- Profile LOR : 60% (Frosted diffuser)

☐ CCT OPTIONS

Single CCT



Tunable-White

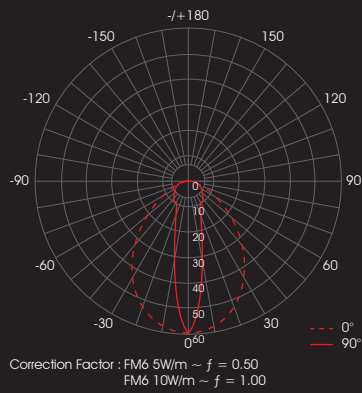


Dim-to-Warm



☐ PHOTOMETRICS

- With FM6 10W/m



☐ SPECIFICATIONS

- With FM6, FM8 TW, FM8 WD Module

CCT	Efficacy (lm/W)	Luminous Flux per meter (lm/m)		Diffuser Type
		5W/m	10W/m	
1800K	46.4	232	464	Frosted
2000K				
2200K	55.3	277	553	
2500K				
2700K	63.6	318	636	
3000K				
3500K				
4000K	66.8	334	668	
5000K				
5700K				
6500K				

ORDERING MATRIX

FULLY ASSEMBLED WITH FLEXIBLE LINEAR LED STRIP

Module	Finishing	Diffuser	Length	LED Module Power & CCT				Wire End & Exit Configuration	Ingress Protection
LP10G	MB Matt Black	F Frosted	113 113mm	FM6	5 5W/m	22 2200K	SR Single Wire End, Rear Exit	IP40 IP40 IP54 IP54	
	SL Silver		↑ ↓ 1963 1963mm		10 10W/m	25 2500K			
				27 2700K					
				30 3000K					
				35 3500K					
				40 4000K					
				50 5000K					
				57 5700K					
				65 6500K					
				FM8 TW/WD	5 5W/m	TW1840 Tunable-White 1800K-4000K			
					10 10W/m	TW2765 Tunable-White 2700K-6500K			
						WD1830 Dim-to-Warm 1800K-3000K			

Example: LP10G-SL-F-963-5-30-SR-IP40

LP10G Profile, Silver, Frosted Diffuser, 963mm, with FM6 - 5W/m, 3000K, Single Wire End at Rear Exit, IP40, Including 2 x End Cap & 2 x Mounting Clip

*Linear profiles of 113mm to 963mm length are supplied with 2 mounting clips.
*Linear profiles of 1013mm to 1463mm length are supplied with 3 mounting clips.
*Linear profiles of 1513mm to 1963mm are supplied with 4 mounting clips.

LINEAR PROFILE ONLY

Profile	Finishing	Diffuser	Length
LP10G	MB Matt Black	F Frosted	1000 1000mm
	SL Silver		1500 1500mm
			2000 2000mm

Example: LP10G-SL-F-2000
LP10G Profile, Silver, Frosted Diffuser, 2000mm

End Cap

LP10G-EC

Example: LP10G-EC
LP10G End Cap

Mounting Clip

LP10G-MC

Example: LP10G-MC
LP10G Mounting Clip